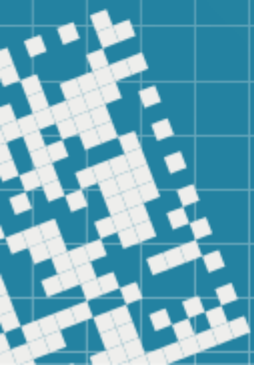
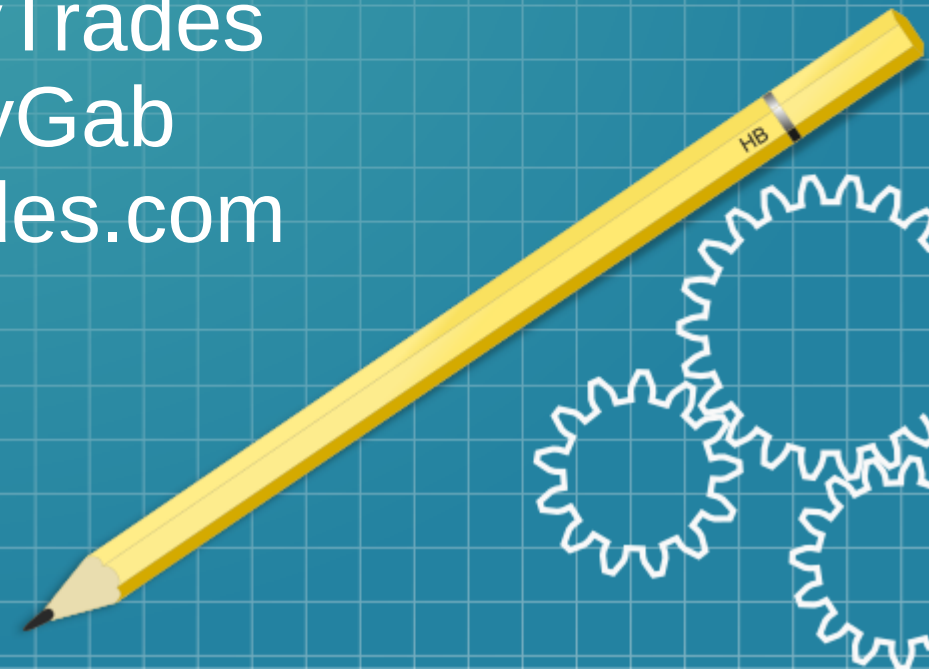




This Week @MidwayTrades

Week Ending July 3, 2020

BitChute: MidwayTrades
Gab: @MidwayGab
<https://midwaytrades.com>



Disclaimer

This presentation is for educational purposes only. Nothing in this presentation is intended to be trading or financial advice.

ENTER AT YOUR OWN RISK

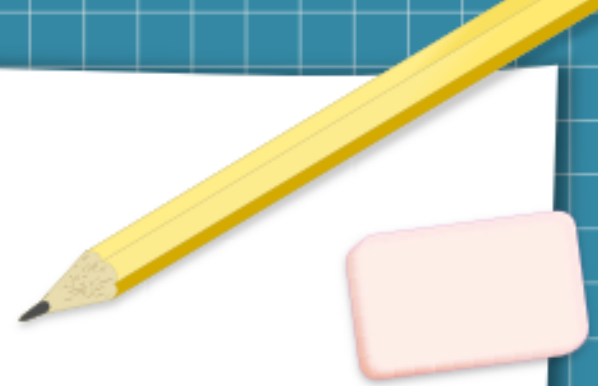
The Week That Was

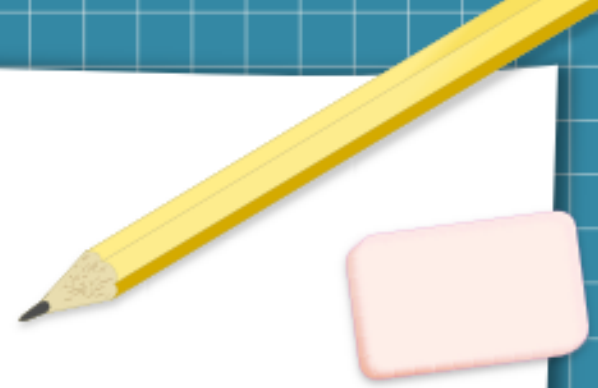
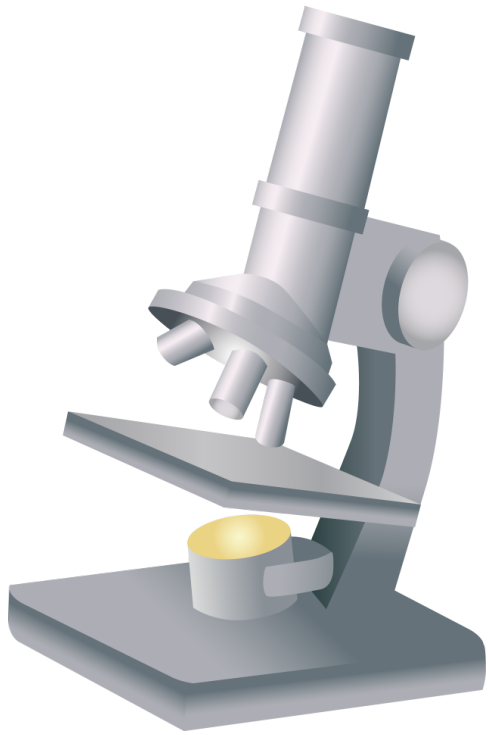


- Theme: “Pets vs Cattle Relearned”
- Start of Week: 1 Trade
 - SPX 22-day Narrow Calendar (7-lot) DIT: 4
- Opened Trades: 1 Trades
 - Mon: SPX 11-day Narrow Calendar (4-lot)
- Closed Trades: 2 Trades
 - Weds: SPX 22-day Narrow Calendar (7-lot)
 - 6 days \$-456.40 (-15%)
 - Thurs: SPX 21-day Narrow Calendar (4-lot)
 - 3 days \$-200.80 (-11%)
 - Balance: **\$-657.20**
- Ended Week: Cash

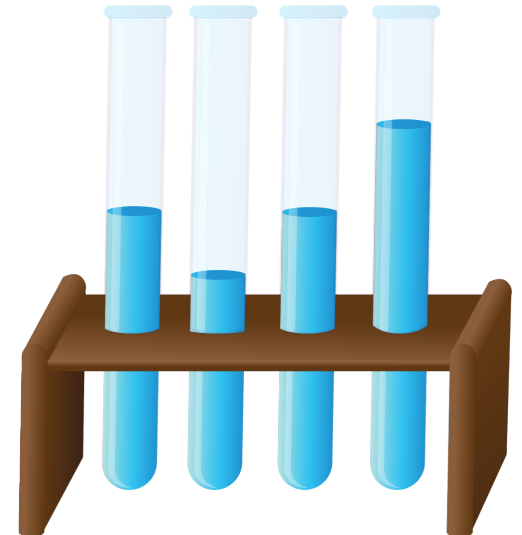
June, 2020

- 11 Trades
- 7 win, 4 losses
- Significant Wins:
 - SPX 22-day Narrow Calendar \$537.50 (32%) in 5 days
 - SPX 24-day Narrow Calendar \$194.40 (11%) in 6 days
- Significant Losses:
 - SPX 10-day Butterfly \$-480.20 (-34%) in 2 days
 - SPX 22-day Narrow Calendar \$-456.40 (-15%) in 6 days
- Lesson: Pets vs Cattle!
- Monthly Total: \$-56.40





Off to the Lab!





Thank you for your time. Let's keep talking!
Gab: Finance Group
@MidwayGab
BitChute: MidwayTrades
Email: midway@midwaytrades.com
<https://midwaytrades.com>
Reddit: [r/options](https://www.reddit.com/r/options) [[u/MidwayTrades](https://www.reddit.com/u/MidwayTrades)]